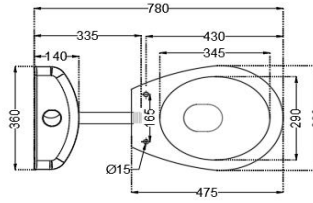
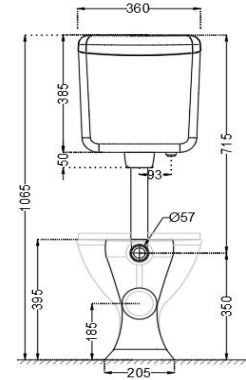


SIDE VIEW



TOP VIEW



BACK VIEW

General Information

Product Code	ECS-WHT-551PNPP184NLZ
Brand	Essco
Colour	White
Type	EWC P-Trap
Material	Ceramic-Vitreous China (VC)

Product Specification

Product Dimension	360x475x395 mm
Bowl Opening (Inner Dimension)	290x345 mm
Product Net Weight	17.0 Kg
Product Gross Weight	20.5 Kg
Packaging Dimension	630x390x470 mm
Outlet	Horizontal
Trap Distance	P Trap
Inlet And Outlet Hole Dimension	Internal diameter of inlet hole dia. $\varnothing 57 \pm 3$ mm
	External diameter of outlet hole dia. $\varnothing 100 \pm 5$ mm
	Vertical distance between the Floor and the centre line of the waste outlet hole ≤ 185 mm

Product Feature	EWC Slim design PP normal close seat cover Complete Trap Wash Anti-Bacterial Glaze Complete Fixing accessories
	Exposed Tank Tough PP (Polypropylene) body Superior ABS (Acrylonitrile butadiene styrene) quality of Fill & Flush Valve Sleek design, Sparkling White Colour Tank With White Tank Superior flush and fill valve design to avoid water overflow Combined Packing – Easy To Maintained the Inventory

ACCESSORIES PROVIDED

Seat Cover	ECS-WHT-109N
Floor fixing screw	ZPS-SNS-FB01
Wall Hung Cistern	ESH-WHT-184NL
L-type bend pipe	ZPS-WHT-LBO1
Extension pipe	ZPS-WHT-EX01

CARE AND CLEANING GUIDELINES

- Vitreous china sanitary ware products are fragile in nature and need to be handled with care (to avoid personal injury) at all times during its storage, handling, installation and use thereafter.
- The product is heavy and it is recommended that two persons hold it while it is being fixed.
- Carefully inspect the new product for damage before installation.
- Risk of product damage. Over tightening may cause breakage or chipping of vitreous china.
- Risk of external leakage. Do not lift or rock the bowl after placement.
- Always test your cleaning solution on an inconspicuous area on the product before applying it to the entire surface.
- Do not allow cleaners to sit or soak on the product.
- Use a soft, dampened sponge or cloth to clean. Never use abrasive material like a bristle brush or scouring pad.
- Wipe surfaces clean and rinse completely with water immediately after applying cleaners.
- Clean Chrome, stainless steel surfaces once a week. Do not use cleaners containing chloride on chrome, stainless steel. If used, rinse the surface immediately to prevent corrosion.
- Wherever chrome plating is used on the products, use only warm water to clean and then dry with a soft cloth.

ACCESSORIES RECOMMENDATION

QUALITY MANAGEMENT SYSTEM - ISO 9001



DISCLAIMER: Our every effort has been made to ensure factual accuracy, the information presented subject to changes due to requirements in different sites, markets and/ or countries. All dimensions are in mm (Tolerance ± 5 MM). Jaquar reserves the right to make the necessary amendments at any time without prior notice.